



Vittoria

THE SANCTUARY COLLECTION





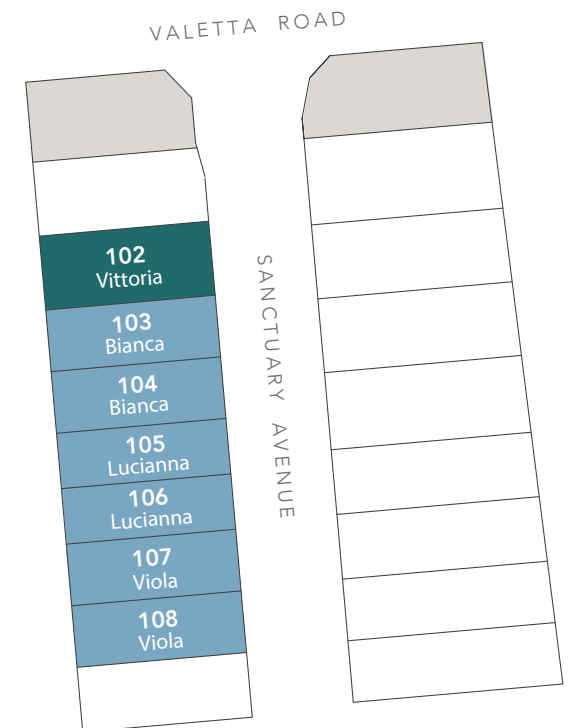
Stylish, luxury homes within the exclusive Sanctuary Collection.

Luxury is at the heart of every home in St. James, with a selection of boutique designs tailored to diverse tastes.

Each home emphasises high-quality living and architectural excellence, offering a broad spectrum of beautifully crafted living spaces.

The Sanctuary Collection, designed to be sanctuaries of peace and tranquility, where the harmony of nature and architecture creates a haven from the bustle of everyday life.

- Quality built by Bradford Homes
- 3.5KW solar package
- 20mm engineered stone benchtops to kitchen, bathrooms and ensuite
- 900mm Smeg appliances including semi-Integrated dishwasher
- LED downlights throughout
- 2700mm ceiling heights ground and first floor
- 2400mm door heights throughout
- Timber laminate floor coverings throughout including stairs
- Carpet to bedrooms
- Landscaping, fencing, stormwater, RWT, exposed aggregate driveway and paths
- Choice of 3 internal colour schemes
- Daiken ducted reverse cycle air conditioning
- 3 coat paint system





Vittoria

LOT 102

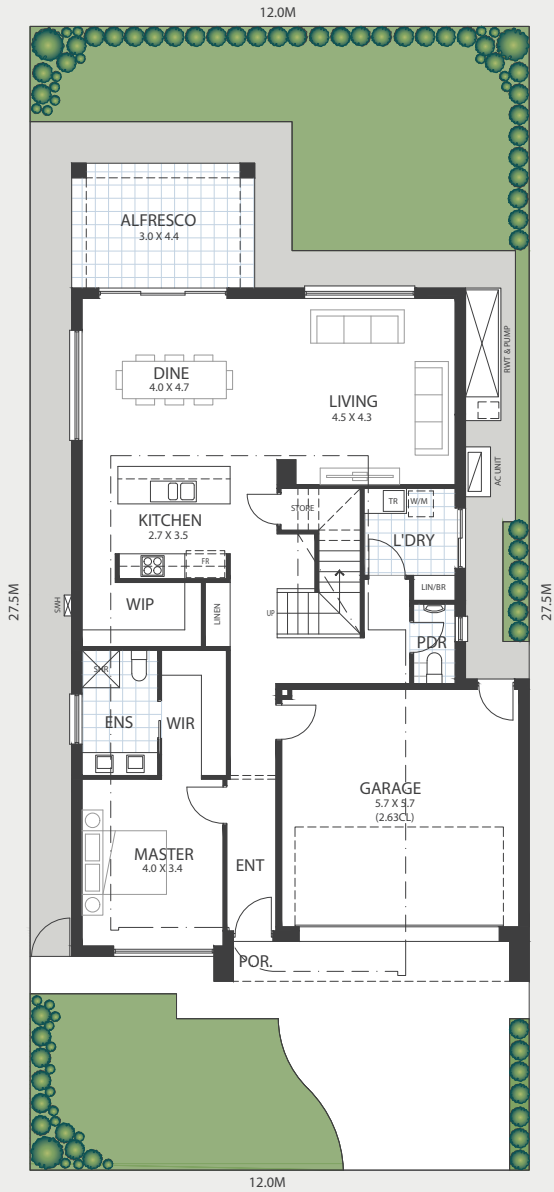
Bedrooms	Bathrooms	Living	Car
4	2.5	2	2

RESIDENCE

Ground Living	123.68m ²
Upper Living	80.91m ²
Garage	36.89m ²
Porch	1.13m ²
Alfresco	13.20m ²
Total	255.81m ²

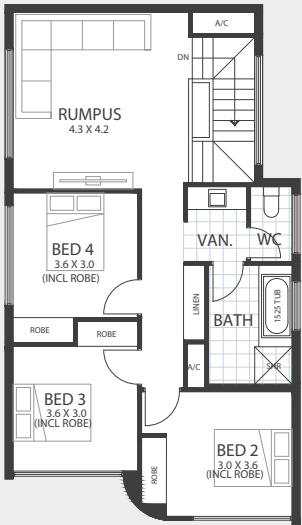
LAND

Width	12m
Depth	27.5m
Total	330m ²



GROUND FLOOR

Discover the beauty and sophistication of The Vittoria, meticulously crafted for modern elegance. Seamlessly blending opulent materials like curved timber, light brick and stylish stone accents, this home exudes timeless charm and contemporary luxury.



FIRST FLOOR



ST.JAMES

For more information contact
Kim Nguyen on 0411 190 906
or visit stjamesliving.com.au



DEVELOPED BY FAIRLAND. RLA 274625

