



# Wattle

THE SYMPHONY COLLECTION







# Luxury is at the heart of every home in St. James.

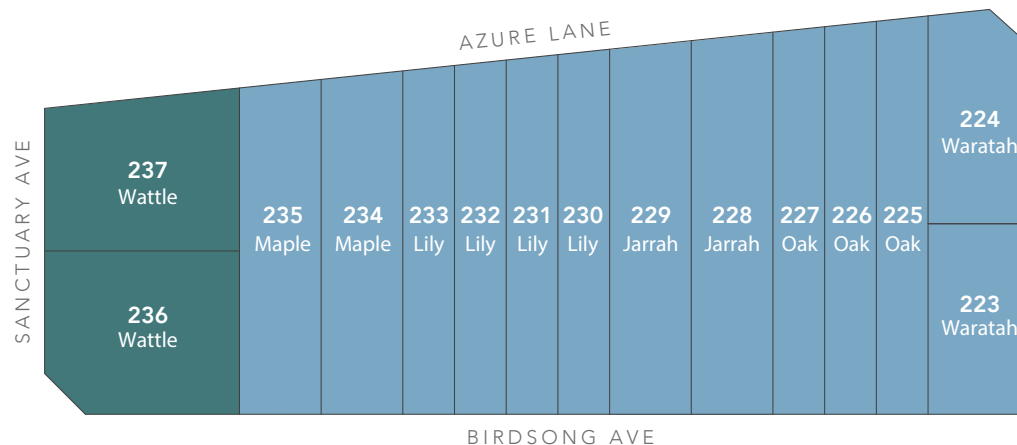
The Symphony Collection is where architectural elegance becomes a seamless symphony with the natural surrounds.

Each terrace offers a harmonious blend of quality and style, orchestrating a timeless street appeal. There is nothing more to consider, these terraces are fixed price and turn-key.

## Includes:

- 3.5KW solar package
- Daiken zoned reverse cycle air conditioning and wifi enabled control panel

- Timber laminate to main floor and carpet to bedrooms
- 600mm Smeg appliances including dishwasher
- 20mm engineered stone to kitchen, bathrooms & ensuite
- 2700mm ceiling height to ground floor and 2400mm to first floor
- LED downlights throughout
- Breeze colour scheme
- Landscaping including exposed aggregate paving, fencing, turf to rear yards, an assortment of native plants, ground covers and shrubs





Designed for a corner block, The Wattle features a 10.48m wide frontage with great street appeal. Its thoughtful design maximises space enhancing its inviting atmosphere.

# Wattle

## LOT 236 & 237

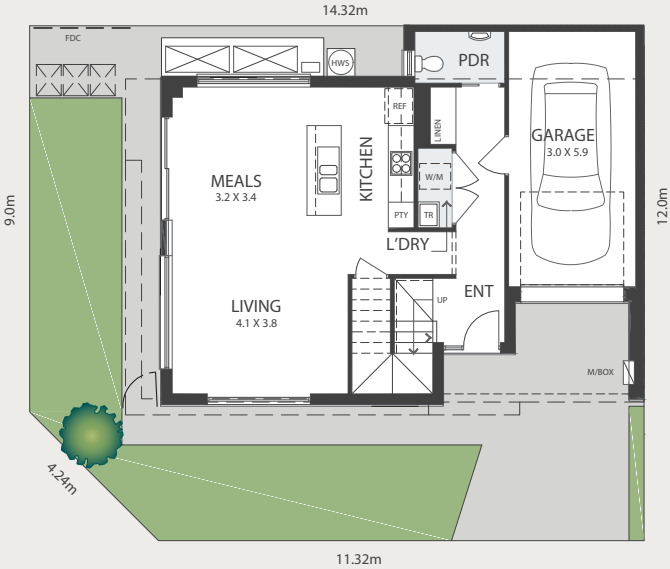
Bedrooms	Bathrooms	Living	Car
3	2.5	1	1

### RESIDENCE

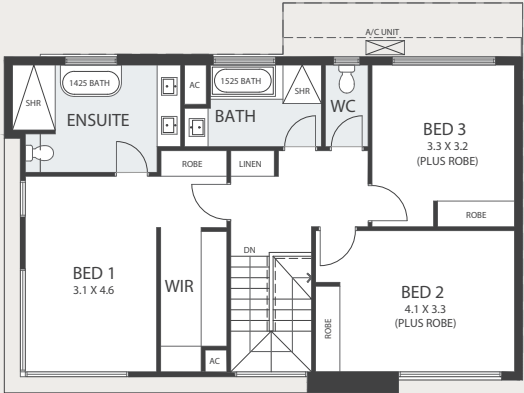
Ground Living	63.49m <sup>2</sup>
Upper Living	89.26m <sup>2</sup>
Garage	21.24m <sup>2</sup>
Overhang	16.84m <sup>2</sup>
Total	190.83m <sup>2</sup>

### LAND

Lot 236	167m <sup>2</sup>
Lot 237	161m <sup>2</sup>



GROUND FLOOR



FIRST FLOOR

**Please note:** The floorplan shown above is for lot 236. The floorplan for lot 237 is reversed and landscaping may differ.





For more information contact  
Kim Nguyen on 0411 190 906  
or visit [stjamesliving.com.au](http://stjamesliving.com.au)



DEVELOPED BY FAIRLAND. RLA 274625

